

Multi-Function Touch Display (RLVBMFDT)



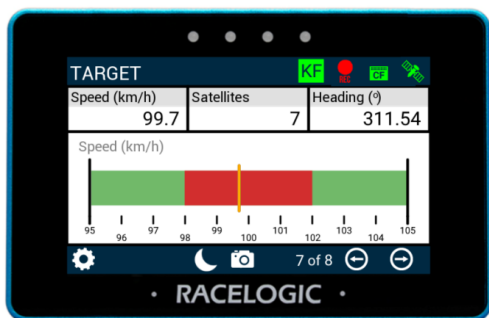
The Multi-Function Touch Display (MFD Touch) is designed to show GPS and CAN derived data channels which are outputted from a VBOX 3i data logger. It can also calculate and present performance test results to the driver in real-time, with no post-processing required.

MFD Touch has a 4.3" daylight readable colour touchscreen, making it easy to see the data required for each test. It also provides the driver with audio and visual alerts, including when user-defined data conditions or test conditions have been met, via an inbuilt speaker and 4 x LED status lights.



The MFD Touch is ideal for testing where the user needs to monitor one or more parameters live in the vehicle. Up to six data parameters can be displayed simultaneously on a screen, with eight different screen layouts available to switch between.

Performance test results are output via CAN and can either be viewed instantly on screen or can be written to an SD card in a text file.



Key Features

- 4.3" TFT colour touchscreen
- Displays up to six data channels simultaneously
- Audio and visual alerts (via inbuilt speaker and LED status lights)
- User-configurable display parameters
- Connects directly to the VBOX 3i via CAN
- Ideal for performance and braking tests (speed-to-speed and trigger activated)
- Supplied with a heavy-duty rubber suction cup
- Compatible with the RACELOGIC CAN Hub

Multi-Function Touch Display

(RLVBMFDT)



Parameters which can be displayed on the MFD Touch:

General parameters are taken from a standard Racelogic CAN output from the VBOX 3i.

Decel test parameters are commonly used in brake testing, the majority of which require the use of the VBOX brake pedal trigger (RLVBACS004) or VBOX Pedal Force Sensor (RLACS282) and Event Marker Interface (RLACS292).

| Standard Parameters | Deceleration Test Parameters |
|---|---|
| <ul style="list-style-type: none"> • Speed (km/h or mph) • Satellite Count • Heading (degrees north) • UTC Time • Height (m or ft) • Vertical Velocity (km/h or mph) • Longitudinal Acceleration (g or m/s²) • Lateral Acceleration (g or m/s²) • Max lateral Acceleration (g or m/s²) • Average Speed (km/h or mph) • Distance Travelled (m or ft) • Longitude (degrees minutes decimal seconds) • Latitude (degrees minutes decimal seconds) • Solution Type • Trigger • Radius of Turn (m or ft) • Filename • Logging Status • Memory Used (%) • KF Status • Speed Quality (km/h or mph) | <ul style="list-style-type: none"> • Deceleration Test Number • Deceleration Distance (m or ft) • Deceleration Time (s) • Deceleration Test Start Speed (km/h or mph) • Deceleration AMS Distance (m or ft) • Deceleration MFDD (g or m/s²) • Average Deceleration (km/h or mph) • Peak Deceleration (km/h or mph) • Deceleration Centreline Deviation (m or ft) • Trigger Test Number • Distance from Trigger (m or ft) • Time from Trigger (s) • Speed at Trigger (km/h or mph) • Corrected Trigger Distance (m or ft) • Trigger AMS Distance (m or ft) • Trigger MFDD (g or m/s²) • Trigger Average Deceleration (g or m/s²) • Trigger Peak Deceleration (g or m/s²) • Trigger Centreline Deviation (m or ft) |
| Accel Test Parameters | |
| <ul style="list-style-type: none"> • Acceleration Test Number • Acceleration Time (s) • Acceleration Distance (m or ft) • Maximum Speed (km/h or mph) • Peak Acceleration (km/h or mph) • Average Acceleration (km/h or mph) • Speed at Distance (km/h or mph) | |

Multi-Function Touch Display (RLVBMFDT)



Environmental and Physical:

| Environmental and Physical | |
|------------------------------|--|
| Input Voltage | 6 – 30 V DC |
| Power | < 7W, powered using the supplied power cable |
| Operating Temperature | -20°C to +60°C |
| Storage Temperature | -20°C to +80°C |
| Size (rounded) | 134 x 84 x 29 mm |
| Weight | 313 g (with plastic mount connector) |

| Touch Screen | |
|--------------------------------|---------------------------|
| Size | 4.3" TFT Capacitive Touch |
| Resolution | 480*800 pixels |
| TFT LCD Display Colours | 262K colours (18 Bit) |

| Mounting | |
|---|--|
| Richter mounting system or ¼" 20TPI UNC | |



Package Contents:

| Description | Product Code |
|--|--------------|
| 1x MFD Touch | VBMFDT |
| 1x VBOX to VBOX Module Cable (2m) | RLCAB005-C |
| 1x Windscreen Suction Mount | ACS318MOUNT |
| 1x Transcend Premium 8 GB Class 10 SDHC Card 400x SDHC UHS-1 | RLACS259 |