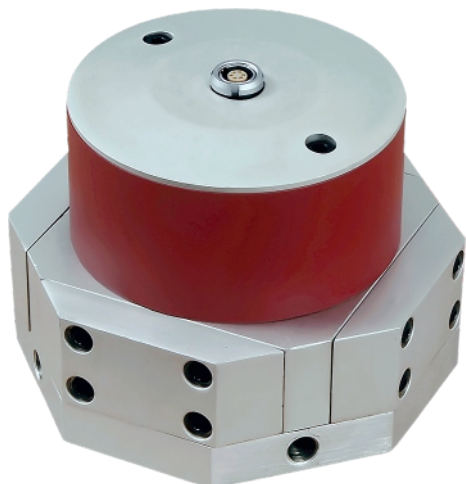


PFM Fuel Flow Meter

Our flowmeter has been specially developed for measurement of fuel consumption in test mode and on the test bench. The PFM is suitable for all types of fuels.

- High measurement resolution
- Suited for gasoline, diesel, bio-diesel and alcohol fuel
- Leakage protected quick couplings, fuel resistant hoses and sealings
- CAN-bus, RS232, digital signal output
- Easy installation



PFM-150 sensor

Description

The small and easy handling PFM has leak-proof connections and seals. It provides CAN bus and digital signal outputs. The data from sensor can be evaluated in various ways to determine the typical fuel consumption during idling, acceleration, braking or during constant speed driving.

Application

The field of application ranges from motorcycles, cars, trucks, buses, commercial vehicles to special vehicles. Due to the high measurement accuracy, hybrid vehicles are also an application for the new Peiseler Fuel Meter.

Technical data

Measuring range:	0.3 - 150 l/h
Measuring accuracy:	1500 pulses/ccm, ± 0.5 % of MV
Resolution:	0.33 ml
Fuel delivery rate:	150 l/h max.
Operating pressure:	5 bar max.
Signal output:	CAN-bus, digital
Power supply:	10 - 30 VDC
Dimensions	
• Sensor:	170 x 215 x 115 mm
• Heat Exchanger:	194 x 245 x 140 mm
• Signal processor:	120 x 111 x 55 mm
Weight	
• Sensor:	2500 g
• Heat Exchanger:	6500 g
• Signal processor:	400 g

Delivery scope

• PFM-150	Art.No. 1500
• PFM-150 H (heat exchanger)	Art.No. 1501
• Signal processor	included
• Cable set	included
• Tube set 11,5 mm, filter 5 bar	included
• Transport case	included

Accessories

All accessories and spare parts on request.



Heat exchanger